



Restroom Cleaning Program

MIRRORS & SINKS

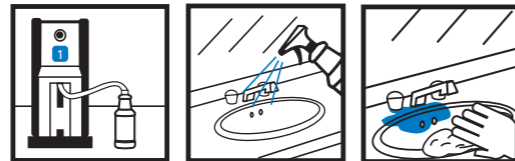


MIRRORS



1. DILUTE
2. SPRAY
3. WIPE

SINKS & FAUCETS



1. DILUTE
2. SPRAY
3. WIPE

1. **DILUTE:** Mix product according to label directions.
2. **SPRAY** on sparingly using a fine to medium spray.
3. **WIPE** immediately with a clean soft cloth.

1. **DILUTE:** Mix product according to label directions.
2. **SPRAY** on sparingly using a fine to medium spray.
3. **WIPE** immediately with a clean soft cloth.

TILE SURFACES AND FLOORS

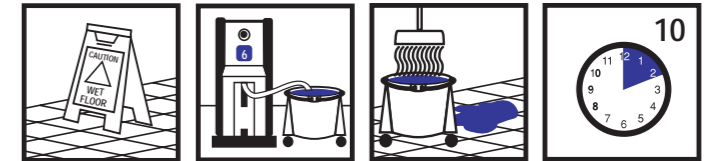


TILE SURFACES



1. DILUTE
2. APPLY
3. WAIT

FLOORS



1. DILUTE
2. APPLY
3. WAIT

1. **DILUTE:** Mix product according to label directions.
2. **APPLY** solution to tile surfaces, wetting surfaces thoroughly.
3. **WAIT:** Treated surfaces must remain wet for 10 minutes. Rinse or let air dry.

1. **DILUTE:** Mix product according to label directions.
2. **APPLY** solution to floors, wetting surfaces thoroughly.
3. **WAIT:** Treated surfaces must remain wet for 10 minutes.

TOILETS AND URINALS



TOILETS AND URINALS



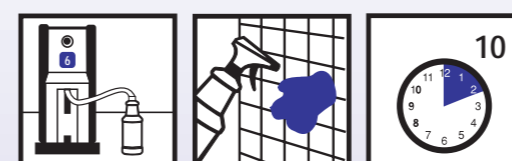
1. DILUTE
2. APPLY
3. SWAB
4. SCRUB
5. WAIT

1. **DILUTE:** Mix product according to label directions.
2. **APPLY:** Spray the exposed surfaces of toilet or urinal.
3. **SWAB** the area with sponge or brush.
4. **SCRUB** thoroughly the interior of the bowl or urinal using a brush.
5. **WAIT:** Let stand for 10 minutes.

SHOWER ROOMS



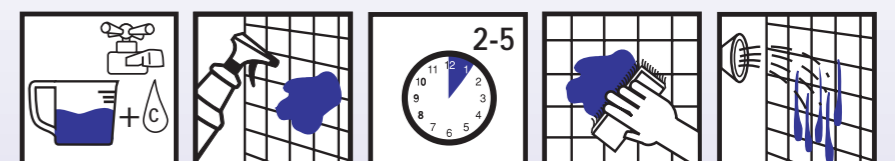
DAILY (LB #6)



1. DILUTE
2. APPLY
3. WAIT

1. **DILUTE:** Mix product according to label directions.
2. **APPLY** solution to shower stall surfaces, wetting surfaces thoroughly.
3. **WAIT:** Treated surfaces must remain wet for 10 minutes. Rinse or let air dry.

WEEKLY (Formula 900)



1. DILUTE
2. APPLY
3. WAIT
4. SCRUB
5. RINSE

1. **DILUTE:** Mix product according to label directions.
2. **APPLY** liberally with a spray bottle or sponge.
3. **WAIT** 2 to 5 minutes for cleaner to work.
4. **SCRUB:** If film is heavy, scrub with a brush or scrubber pad.
5. **RINSE** well with clear water.



Distributed By:

MSDS Fax Retrieval: **800-551-0101** CHEMTREC Day or Night: **800-424-9300**

TECH HOTLINE:
800-810-4829